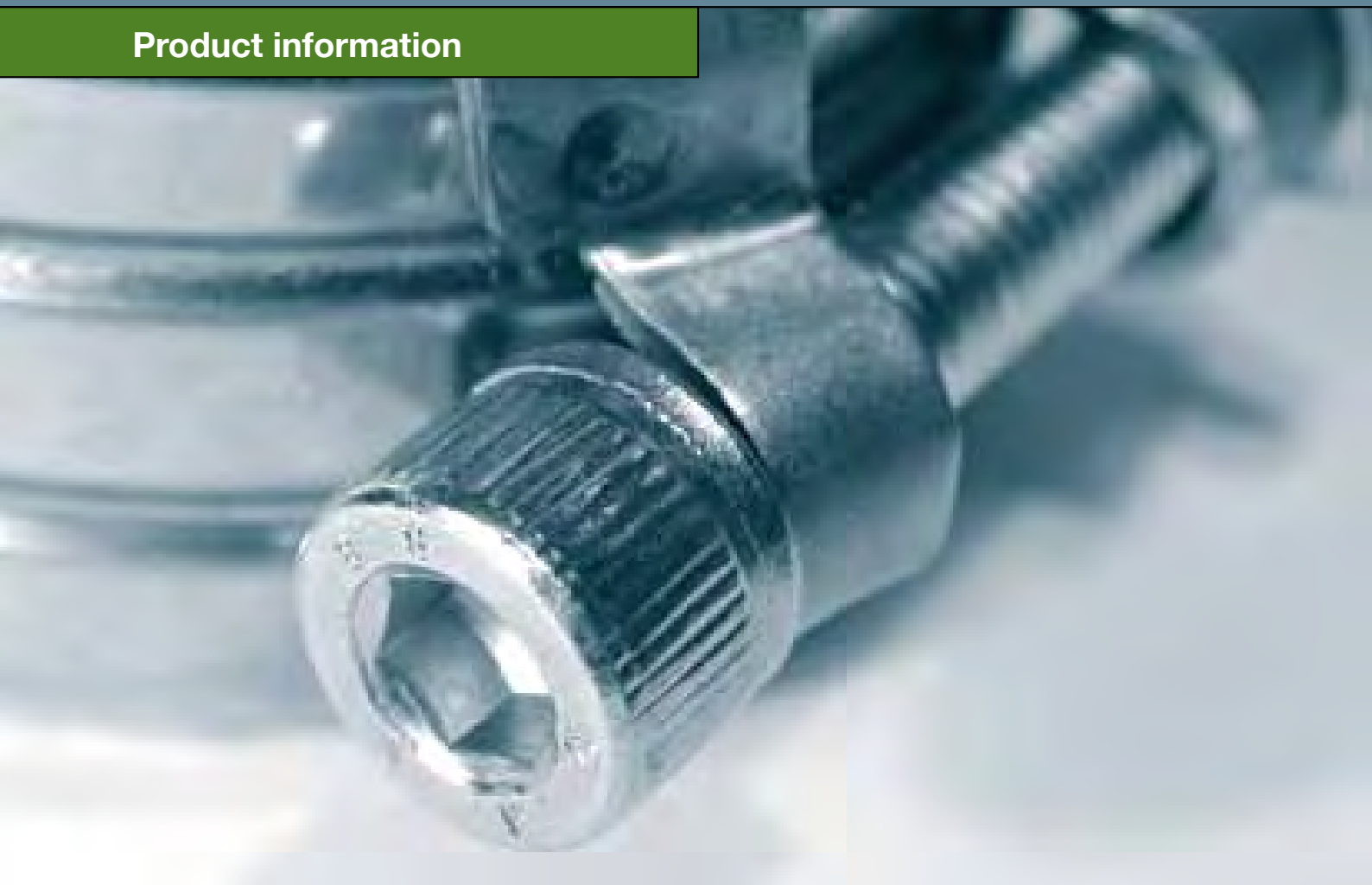
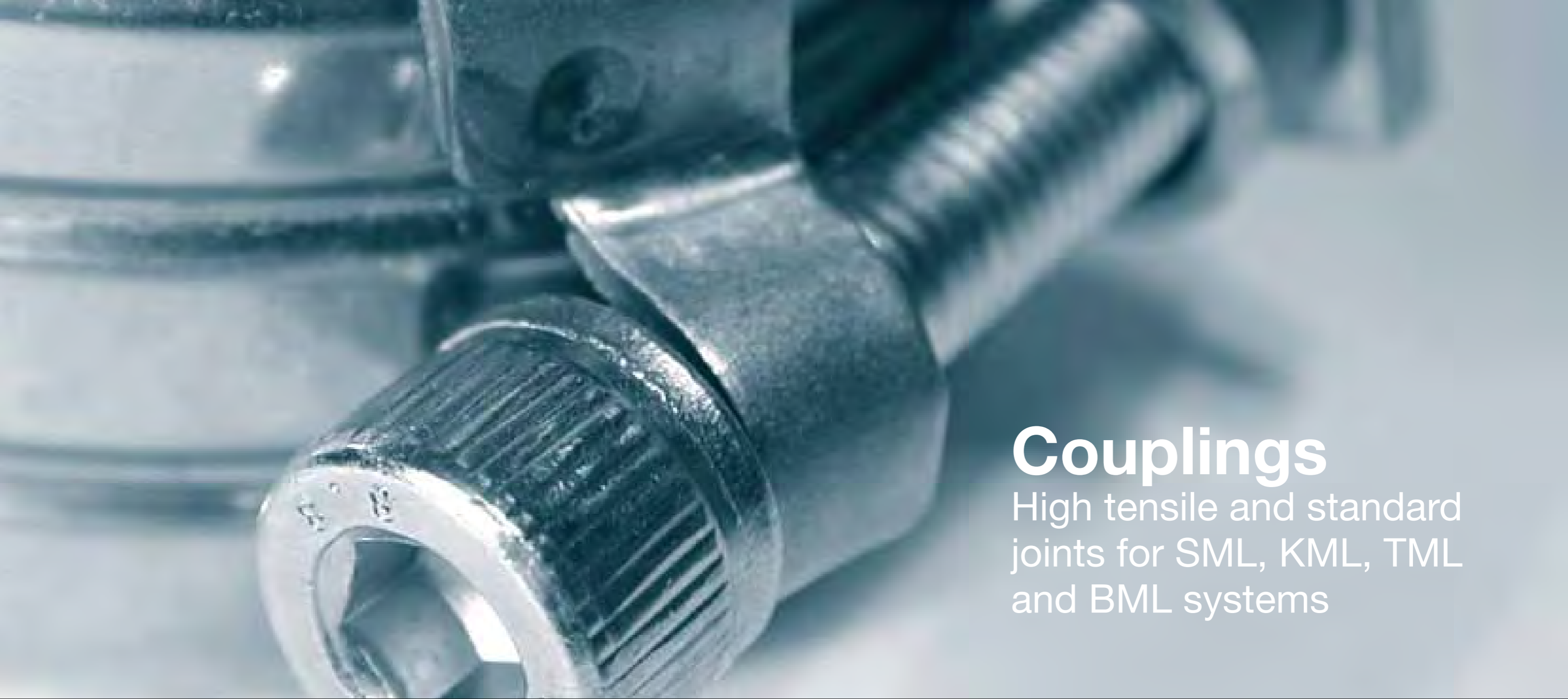


Couplings

High tensile and standard joints for SML, KML, TML and BML systems

Product information





Couplings

High tensile and standard joints for SML, KML, TML and BML systems

Couplings – product information

Gas and water tightness

EN 877 is the applicable standard for joints for cast iron waste water systems. According to this standard, the entire system, whether non-pressurised or pressurised, must be both gas and watertight.

Installation standards

The standard DIN EN 12056 describes how cast iron waste water systems must be installed. For installation outside buildings and for drains, DIN EN 752 and DIN EN 1610 apply.

Quality tested

All RSP® couplings are specially adapted to the RSP® range of pipes and fittings and are produced and tested according to the latest requirements. Our coupling range ensures a reliable, secure connection to meet diverse requirements for a wide variety of applications.

Up to every task

The RSP® range includes one and two-bolt couplings, Fix couplings, claws and pipe couplings for civil engineering, building and bridge construction, and for use with pressurised and non-pressurised drainage pipes.

They are available in a range of metal grades (e.g. 1.4510/11 and 1.4571) and in dimensions between DN 40 and DN 400, or more in some cases.

Properties



Because they are so easy to fit, RSP® couplings are both reliable and cost-effective. Developed with real-life applications in mind, they are the optimal solution in all areas of use.

To meet the requirements placed on them in their various fields of application, RSP® couplings are available in materials such as stabilised ferritic chrome steel (1.4510/11), various grades of austenitic nickel chrome steel 1.4301, and austenitic chrome molybdenum steel (stainless 1.4571).

Their locking units are based on mature technology for ease of use and a secure, perfectly sealed joint. High axial tensile strength and standard versions are available depending on the requirements.

We also offer EPDM gaskets for waste water systems in buildings. Our NBR rubber gaskets are additionally suitable for use with waste waters contaminated with oil or petrol.

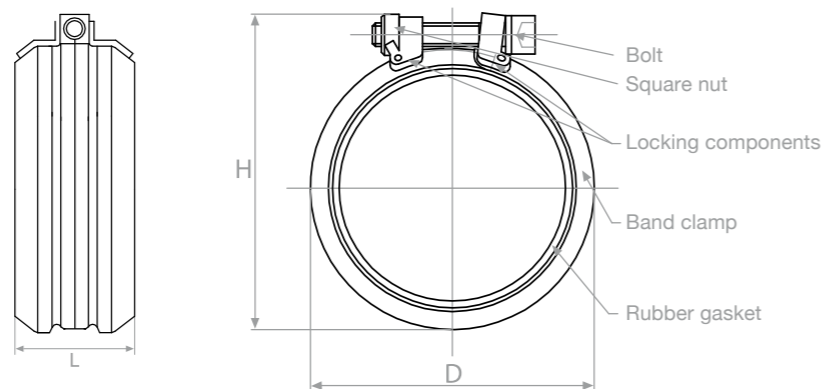
A further strength of our range of couplings is the wide variety of nominal diameters available: between DN 40 and DN 400, and even more in some cases.

Our couplings can also be used for joining pipes and fittings of different materials.

For non-standard projects, we offer a selection of very large pipe couplings.

Contents | Product overview

RSP-S1	6
RSP-S1+	6
NBR gasket	6
Rapid	7
Rapid INOX	7
EPDM rubber gasket	7
CV	8
CE nickel chrome steel	8
Combination claw	8
Fix coupling	9
G-A claw	9
SVE coupling	9
Flex pipe coupling	10
Flex INOX pipe coupling (design as for Flex)	10
Grip pipe coupling	10
Grip INOX pipe coupling (design as for Grip)	10



Standard, fire-protected

RSP-S1

One-bolt coupling for SML and KML systems, quick fit, locking unit: 1.4301 (V2A), bolt and nut: galvanised steel, min. hardness 8.8, gasket: EPDM, alternatively available in NBR rubber

DN	bar	Recommended tightening torque (Nm)	Bolt	PU (Packing unit)	Item no.
50	0.5	15 – 20	M 8	245	RSPS1050
70	0.5	15 – 20	M 8	140	RSPS1070
80	0.5	15 – 20	M 8	133	RSPS1080
100	0.5	15 – 20	M 8	144	RSPS1100
125	0.5	15 – 20	M 8	80	RSPS1125
150	0.5	15 – 20	M 8	30	RSPS1150
200	0.5	15 – 20	M 10	24	RSPS1200



Standard, fire-protected

RSP-S1+

One-bolt coupling for KML, TML and BML systems (use with heat shrink tubing for BML), locking unit: 1.4401 (V4A), bolt and nut: A4-70, gasket: EPDM, alternatively available in NBR rubber

DN	bar	Recommended tightening torque (Nm)	Bolt	PU (Packing unit)	Item no.
50	0.5	15 – 20	M 8	245	RSPS1+050
70	0.5	15 – 20	M 8	140	RSPS1+070
80	0.5	15 – 20	M 8	133	RSPS1+080
100	0.5	15 – 20	M 8	144	RSPS1+100
125	0.5	15 – 20	M 8	80	RSPS1+125
150	0.5	15 – 20	M 8	30	RSPS1+150
200	0.5	15 – 20	M 10	24	RSPS1+200



NBR gasket

Rubber gasket for one-bolt couplings, NBR rubber, petrol and oil-resistant

DN	Item no.
50	180050
70	180070
80	180080
100	180100
125	180125
150	180150
200	180200
250	180250
300	180300



Standard, fire-protected

Rapid

Locking unit: 1.4301/1.4510/11, bolt and nut: galvanised, gasket: EPDM

DN	bar	Material W2	Bolt	PU	Item no.
40	0.5	Band clamp chrome steel 1.4510/11	M 5	50	RW2500040
50	0.5	Band clamp chrome steel 1.4510/11	M 8	100	RW2500050
70	0.5	Band clamp chrome steel 1.4510/11	M 8	100	RW2500070
80	0.5	Band clamp chrome steel 1.4510/11	M 8	100	RW2500080
100	0.5	Band clamp chrome steel 1.4510/11	M 8	100	RW2500100
125	0.5	Band clamp chrome steel 1.4510/11	M 8	70	RW2500125
150	0.5	Band clamp chrome steel 1.4510/11	M 8	50	RW2500150
200	0.5	Band clamp chrome steel 1.4510/11	M 10	15	RW2500200



Standard, fire-protected

Rapid INOX

Locking unit: 1.4571, bolt and nut: A4, gasket: EPDM – suitable for buried systems

DN	bar	Material W5	Bolt	PU	Item no.
40	0.5	Band clamp CrNi molybdenum steel 1.4571	M 5	50	RW5500040
50	0.5		M 8	100	RW5500050
70	0.5		M 8	100	RW5500070
80	0.5		M 8	100	RW5500080
100	0.5		M 8	100	RW5500100
125	0.5		M 8	70	RW5500125
150	0.5		M 8	50	RW5500150
200	0.5		M 10	15	RW5500200
250	0.5		M 10	4	RW5500250
300	0.5		M 10	4	RW5500300



Reducing joint

EPDM rubber gasket

Only for use with one-bolt coupling DN 80

DN	Material W5	PU	Item no.
70/80	EPDM	50	40070/80



Standard

CV

Locking unit with bolts: galvanised, gasket: EPDM

DN	bar	Material W2	Bolt	PU	Item no.
50	-	Band clamp chrome steel 1.4510/11	M 6	100	RW2100050
70	-	Band clamp chrome steel 1.4510/11	M 6	100	RW2100070
80	-	Band clamp chrome steel 1.4510/11	M 6	100	RW2100080
100	-	Band clamp chrome steel 1.4510/11	M 8	50	RW2100100
125	-	Band clamp chrome steel 1.4510/11	M 8	70	RW2100125
150	-	Band clamp chrome steel 1.4510/11	M 8	50	RW2100150
200	-	Band clamp chrome steel 1.4510/11	M 8	30	RW2100200
250	-	Band clamp chrome steel 1.4510/11	M 8	25	RW2100250
300	-	Band clamp chrome steel 1.4510/11	M 8	20	RW2100300



Standard

CE nickel chrome steel

Locking unit with bolts: A2, gasket: EPDM – suitable for buried systems

DN	bar	Material W4	Bolt	PU	Item no.
50	-	Band clamp nickel chrome steel 1.4301	M 6	25	RW4600050
70	-		M 6	25	RW4600070
100	-		M 8	50	RW4600100
125	-		M 8	20	RW4600125
150	-		M 8	20	RW4600150
200	-		M 8	20	RW4600200
250	-		M 8	20	RW4600250
300	-		M 8	20	RW4600300
400	-	Band clamp CrNi molybdenum steel 1.4571	M 8	3	RW4600400



High axial tensile strength

Combination claw

Suitable for all one and two-bolt couplings

DN	bar	Material W1	Bolt	PU	Item no.
40	10	St 3K 40 w. hardened claw insert	M 8	10	402040
50	10	St 3K 40 w. hardened claw insert	M 8	10	402050
70	10	St 3K 40 w. hardened claw insert	M 8	10	402070
80	10	St 3K 40 w. hardened claw insert	M 8	10	402080
100	10	St 3K 40 w. hardened claw insert	M 10	10	402100
125	5	St 3K 40 w. hardened claw insert	M 10	10	402125
150	5	St 3K 40 w. hardened claw insert	M 10	10	402150
200	3	St 3K 40 w. hardened claw insert	M 12	2	402200



Reducing joint

Fix coupling

For joining SML pipes and fittings with other pipe systems (materials)

DN	bar	Material	Bolt	PU	Item no.
50	-	Gasket: EPDM Band clamp steel 1.4016		50	300050
70	-			50	300070
80	-			20	300080
100	-			20	300100
125	-			10	300125



High axial tensile strength

G-A claw

Recommended for use up to 10 bar with Rapid coupling or 5 bar with CV coupling.

DN	bar	Material W2	Bolt	PU	Item no.
50	10 (5*)	Stab. ferr. chrome steel	M 8	10	RW2404050
70	10 (5*)	Stab. ferr. chrome steel	M 8	10	RW2404070
80	10 (5*)	Stab. ferr. chrome steel	M 8	10	RW2404080
100	10 (5*)	Stab. ferr. chrome steel	M 10	10	RW2404100
125	10 (5*)	Stab. ferr. chrome steel	M 10	5	RW2404125
150	5	Stab. ferr. chrome steel	M 10	3	RW2404150
200	5	Stab. ferr. chrome steel	M 12	4	RW2404200
250	3	Stab. ferr. chrome steel	M 12	4	RW2404250
300	3	Stab. ferr. chrome steel	M 12	4	RW2404300



* with CV and CE couplings.

Standard

SVE coupling

For simple assembly of buried pipe systems

DN	Material	PU	Item no.
50	Polypropylene push fit coupling with internal NR-SBR sealing lip. Suitable for spanning long distances between pipes	50	301050
80		25	301080
100		25	301100
125		20	301125
150		20	301150
200		10	301200



Standard

Flex pipe coupling

Can withstand up to 10 bar pressure in conjunction with appropriate fixing points, gasket: EPDM

DN	bar	Material W4	Bolt	PU	Item no.
40 - 100	-	Band clamp nickel chrome steel 1.4301	M 8		
125 - 150	-	Band clamp nickel chrome steel 1.4301	M 10		
200 - 600	-	Band clamp nickel chrome steel 1.4301	M 12		

Flex INOX pipe coupling (design as for Flex)

Suitable for use in bridge construction and buried systems

DN	bar	Material W5	Bolt	PU	Item no.
40 - 100	-	Band clamp CrNi molybdenum steel 1.4571	M 8		
125 - 150	-		M 10		
200 - 600	-		M 12		



High axial tensile strength

Grip pipe coupling

Suitable for joining pipes of large diameter, threaded studs (heavy-duty version) and bolts: galvanised, gasket: EPDM or NBR

DN	bar	Material W4	Bolt	PU	Item no.
40 - 50	10	Band clamp nickel chrome steel 1.4301	M 8		
70 - 100	10	Band clamp nickel chrome steel 1.4301	M 10		
125 - 150	10	Band clamp nickel chrome steel 1.4301	M 12		
200 - 400	10	Band clamp nickel chrome steel 1.4301	M 16		
500	6	Band clamp nickel chrome steel 1.4301	M 16		
600	4	Band clamp nickel chrome steel 1.4301	M 16		

Grip INOX pipe coupling (design as for Grip)

Threaded studs (heavy-duty version) and bolts: A4 – suitable for buried systems

DN	bar	Material W5	Bolt	PU	Item no.
40 - 50	10	Band clamp CrNi molybdenum steel 1.4571	M 8		
70 - 100	10		M 10		
125 - 150	10		M 12		
200 - 400	10		M 16		
500	6		M 16		
600	4		M 16		



More parts available on request (see price list/website).

The full set of RSP® catalogues

Cast iron waste water systems, couplings, and technology and installation

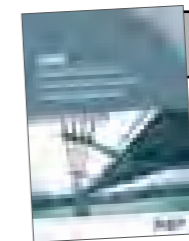
Request a catalogue now!
+49 (0) 8034 70 82-0



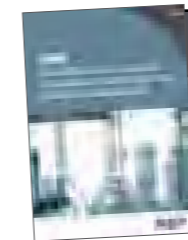
RSP®
Well connected



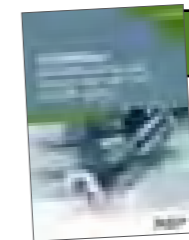
SML
Socketless cast iron waste water system for building construction



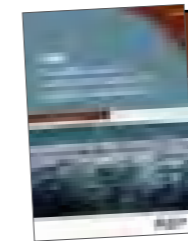
BML
Socketless cast iron waste water system for bridge construction



KML
Socketless cast iron system for aggressive waste water from kitchens and laboratories



Couplings
High tensile and standard joints for SML, KML, TML and BML systems



TML
Socketless cast iron waste water system for civil engineering applications



Technology and installation
What you need to know

Or download any catalogue from:
www.rsp-pipes.com

RSP® Ruck Sanitärprodukte GmbH | Kirchstraße 1 | 83126 Flintsbach am Inn | Tel.: +49 (0) 8034 70 82-0

www.rsp-pipes.com